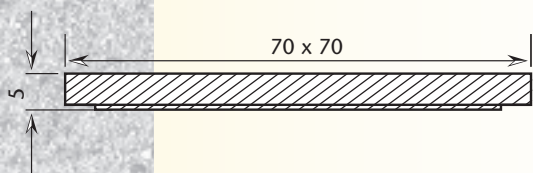


## Éléments de 60\*



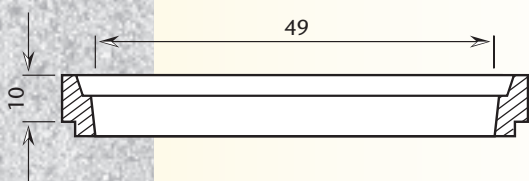
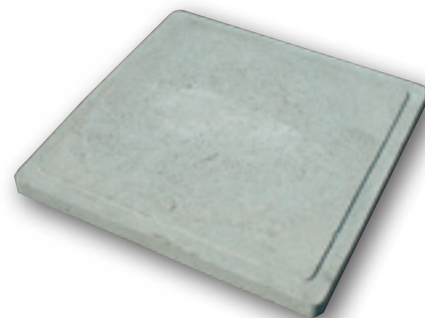
### C 60 E

*Couvercle*

Largeur: 70 x 70 cm

Épaisseur: 5 cm

Poids: 54 kg



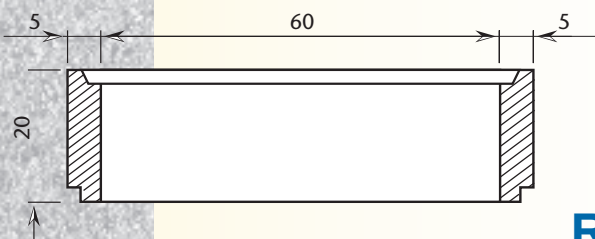
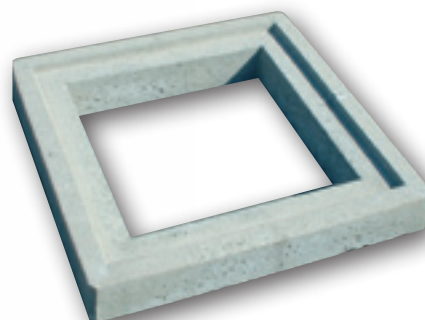
### STF 60 E

*Support  
pour tampon fonte*

Largeur: 70 x 70 cm

Épaisseur: 10 cm

Poids: 62 kg



### RH 60.20 E

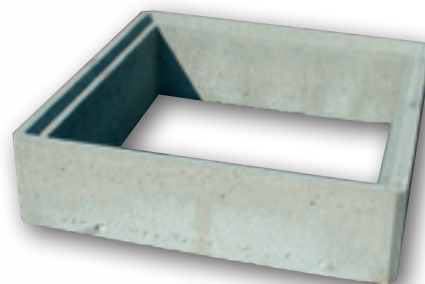
*Rehausse*

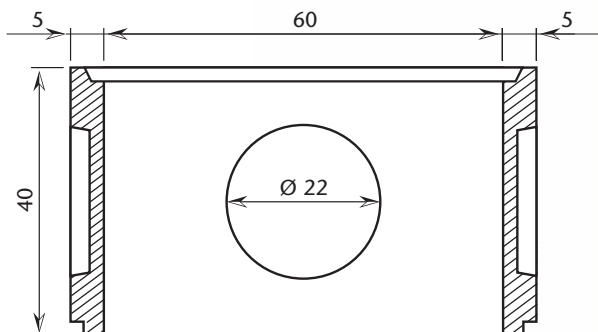
*dimensions intérieures*

Largeur: 60 x 60 cm

Hauteur: 20 cm

Poids: 64 kg





## RH 60 E

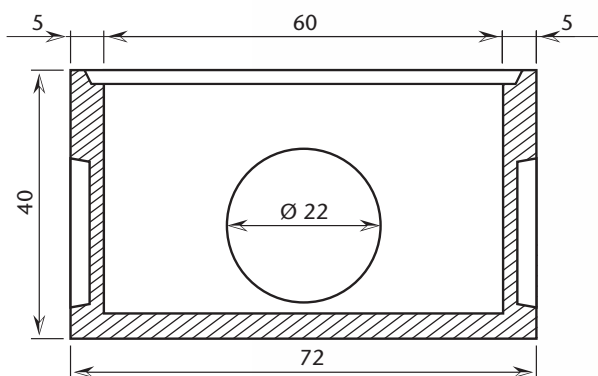
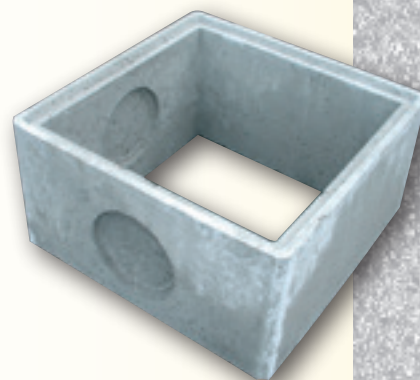
*Rehausse*

*dimensions intérieures*

Largeur: 60 x 60 cm

Hauteur: 40 cm

Poids: 122 kg



## RC 60 E

*Regard*

*dimensions intérieures*

Largeur: 60 x 60 cm

Hauteur: 40 cm

Poids: 170 kg



### Notes

\* Boîte de branchement